



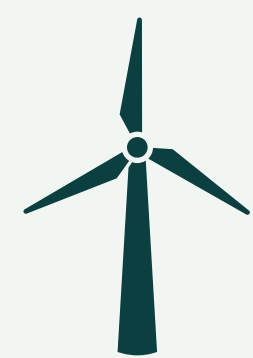
CWP Energy

# Welcome

Welcome to CWP Energy's community consultation on the proposed Caple Rig Wind Farm. Thank you for taking the time to visit today's event.

Please take your time to view the information on the exhibition boards and feel free to discuss your comments and questions with our team members.

Your feedback would be greatly valued as we refine our plans and look to submit the planning application in due course.



Up to 31 turbines with a maximum tip height of 250m.



The capacity to generate over 217 MW. Powering over 228,000 homes every year.



Displacing over 369,000 Tonnes of Carbon Dioxide annually.



caplerigwindfarm@cwpenenergy.uk



www.caplerigwindfarm.uk





# The Proposal

Caple Rig Wind Farm will be situated on an upland area between Langholm and Teviothead in Dumfries and Galloway. Detailed environmental and ecological studies are underway, which will, alongside local feedback and stakeholder comments, help us to inform the final design.

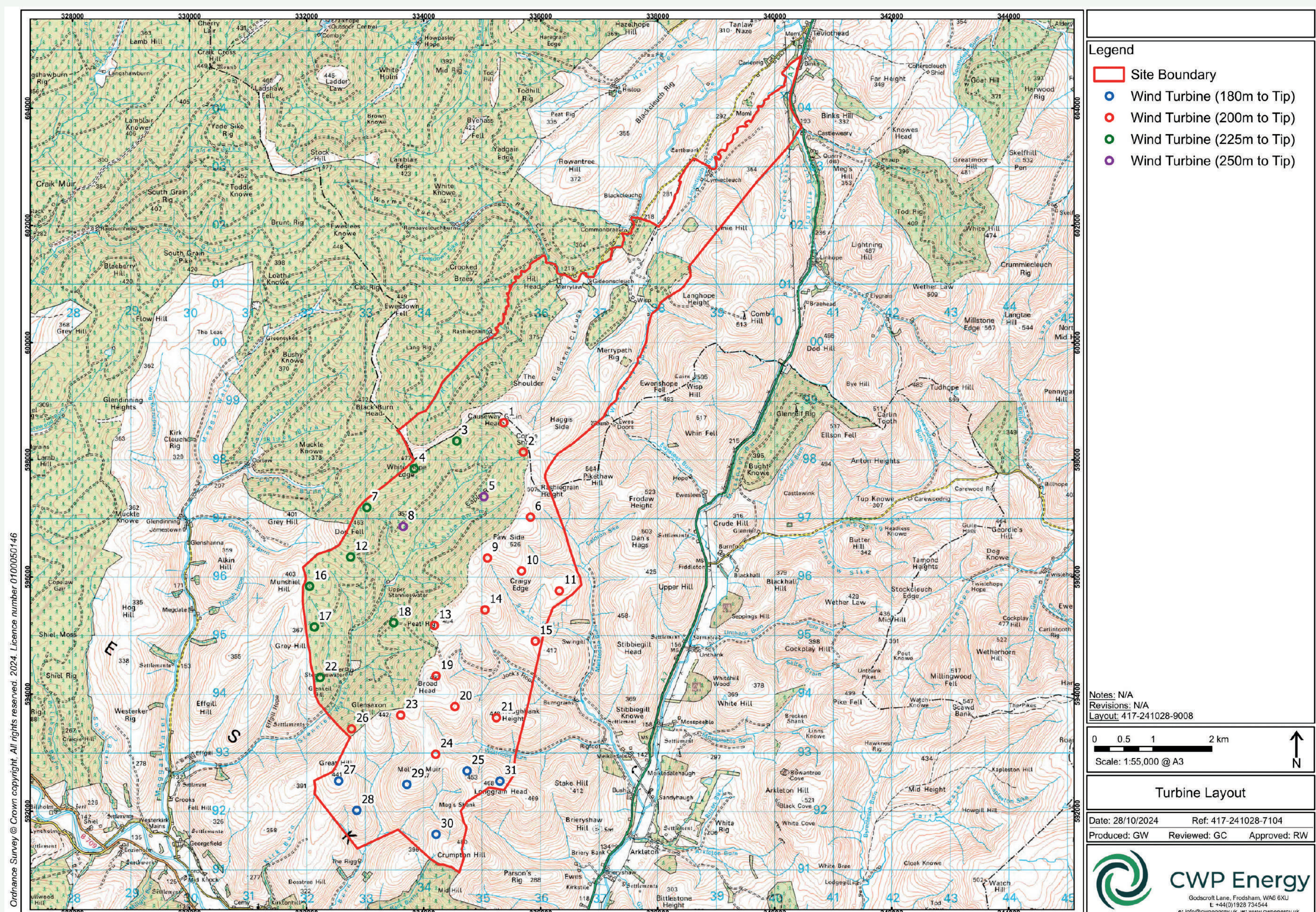
31  
turbines

180m-  
250m  
to Tip

217  
MW

228,000  
homes  
powered

As the proposed wind farm will generate over 50MW of electricity, the application will be determined by the Scottish Government's Energy Consents Unit (ECU). The Scoping Report will be submitted shortly and we will continue to engage with the local community and stakeholders as we await the Scoping Opinion.



There was a previous planning application for this site (Faw Side Wind Farm), which consisted of 45 turbines. The scheme was rejected following a public inquiry. However, CWP Energy look to address these challenges, and are proposing a reduced scheme, consisting of 31 turbines.





# Project Evolution

Since the Faw Side proposal, submitted in 2019, we have strived to improve our approach and address concerns brought up by the local community. Below lists some of the key concerns voiced by residents in Langholm and the Ewes Valley during the consultation process for Faw Side Wind Farm.

## **Community approach**

Amidst the Faw Side proposal, the COVID-19 pandemic impacted how we communicated with local people. However, since the inception of Caple Rig Wind Farm, we have been present in the community, liaising with local people and community groups in both Langholm and the Ewes Valley. We have been keen to grasp how the community could benefit and what key projects we can assist with.

## **Environmental concerns**

CWP have listened and understood the concerns for key environmental aspects. With further site investigation and onsite surveys, we have addressed local concerns regarding the environment, thus producing a more suitable scheme.

## **Visual impacts**

Concerns regarding visual impacts have been taken onboard. The scheme is now more set back from the edge of the Southern Uplands and Ewes Valley, and there are no turbines in Scottish Borders. Turbines are much more set back from the valley ridges, with those turbines closest to the A7 reduced in height. The linear distance of the turbines has been reduced and more turbines are now placed within the forestry. Turbines have been removed from the north and east, so it is more set back on the higher hills, and away from the valleys.

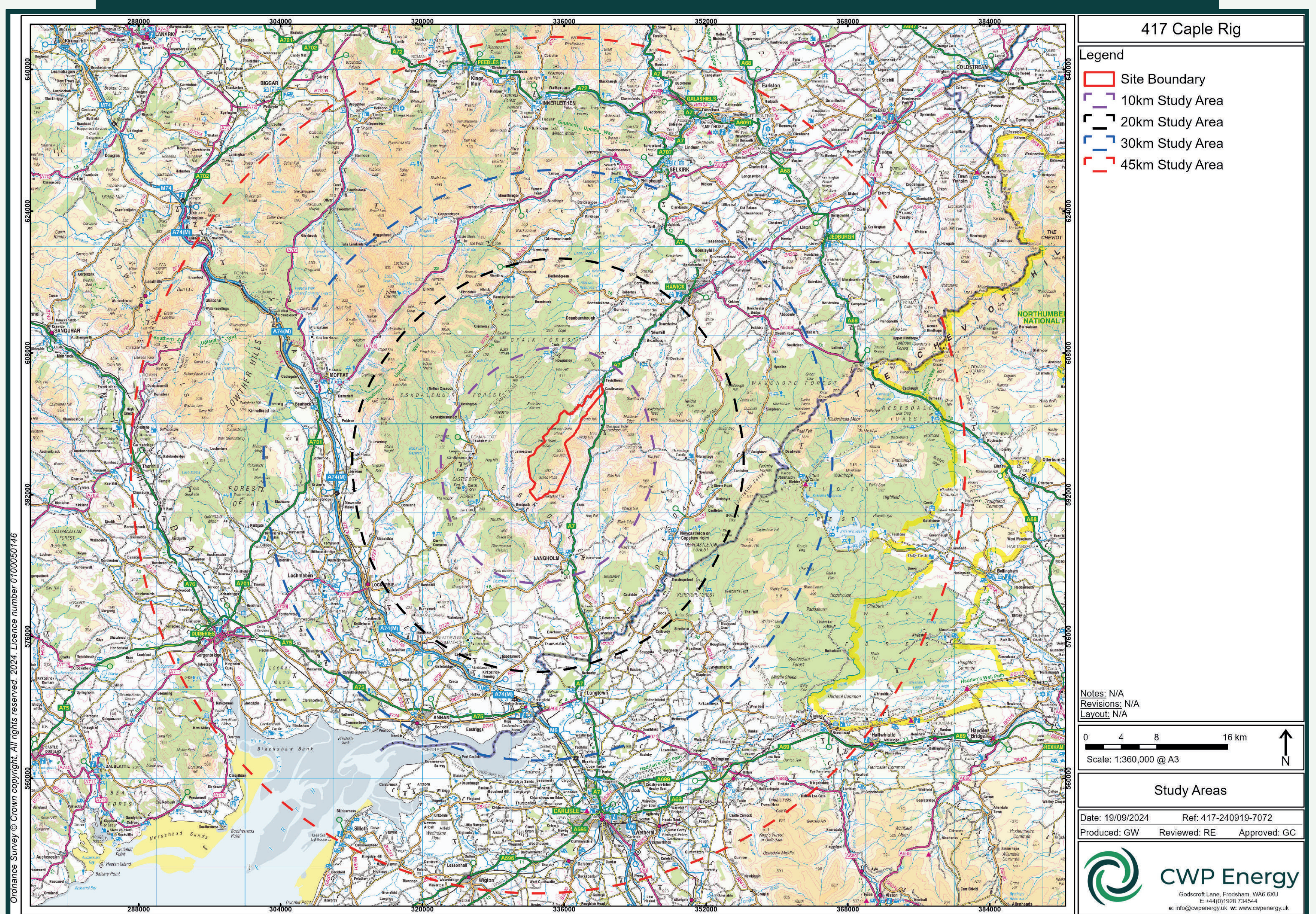




# Landscape and Visual

The Landscape and Visual Impact Assessment (LVIA) will illustrate and assess the appearance of Caple Rig Wind Farm in the surrounding landscape. The Assessment will explore the effects on the landscape resource and visual amenity on key local viewpoints. The LVIA will thus present a clear assessment

following current guidance and best practice, to inform the final layout design of the Proposed Development. The Assessment will produce a set of visualisations and photomontages from several viewpoints. The selected locations ensure that a broad range of view directions, distances and visual receptors have been evaluated.



Photomontages and ZTVs are provided to illustrate where we think we have addressed previous LVIA issues. Photomontages are photographs overlaid with computer-generated images to illustrate how the proposed development would be viewed from locations in the surrounding landscapes and settlements nearby.



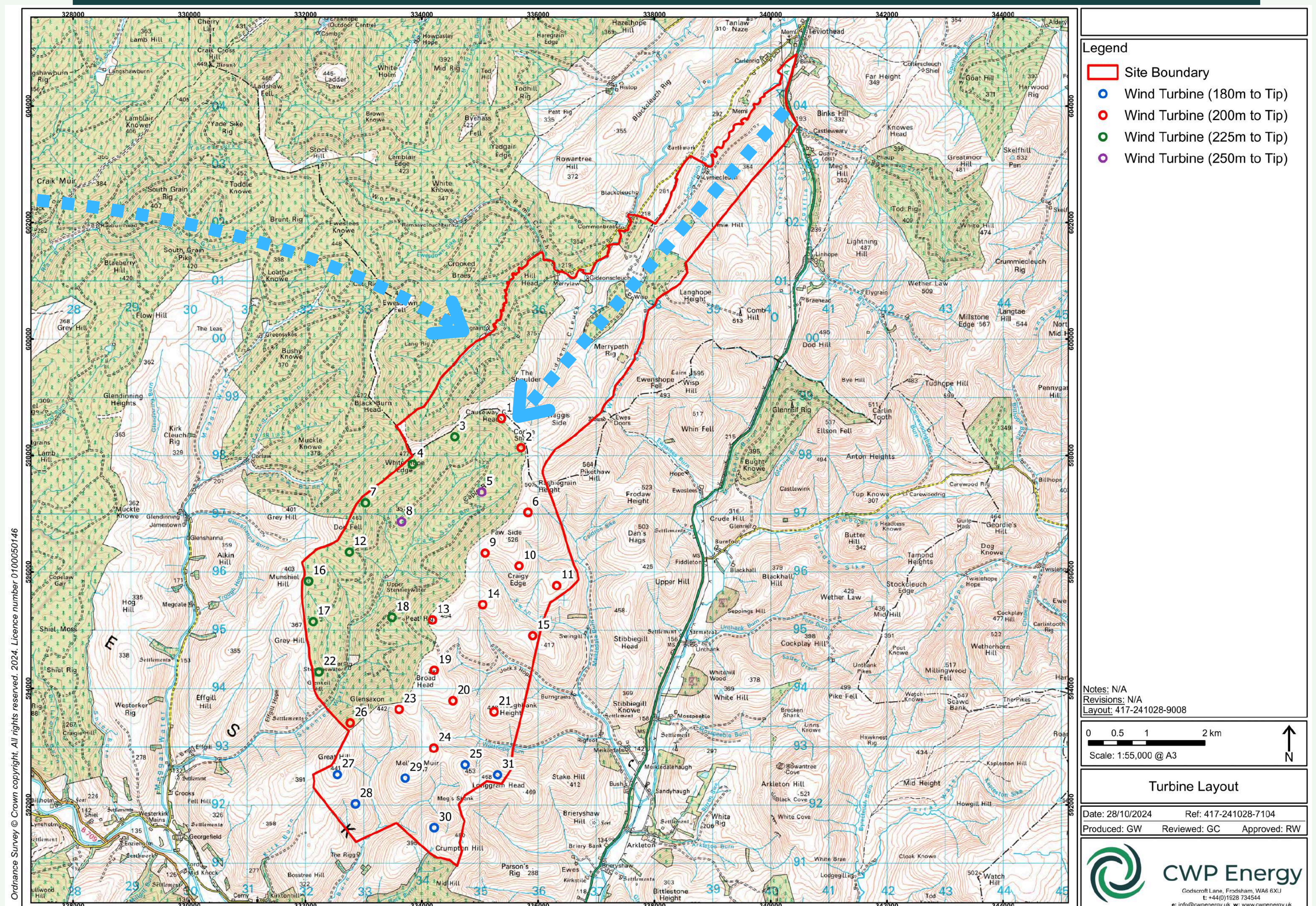


# Access Options

The main access to the site is planned to utilise the A7 trunk road entering site just south of Teviothead, via a new built site entrance.

However, we are exploring and investigating other potential access routes via existing forestry tracks, which could help decrease any potential disruption to main roads.

The blue arrows on the plan below indicate possible access routes. It is important to note that these arrows are **indicative**, as final access track design will require further detailed environmental assessment as part of the EIA.



We are very keen to **hear your thoughts** regarding the above proposals for access into the Caple Rig site. Please **utilise the suggestion book, the suggestion board, or speak to a member of staff** to record your thoughts regarding the access options.





# Common Questions

## Why onshore wind?

Onshore wind resource in this area of Scotland is bountiful, thus it can play a significant role in reaching Scotland's ambitious renewable energy targets. Onshore wind is cheaper, cleaner and faster to deploy than other renewable technologies. Overall, it is great in helping us to reduce our dependency on fossil fuels and lead us into a Net Zero future.

## How do you determine if a site is suitable for onshore wind?

We undertake a series of in-depth surveys to analyse where the best areas would be to have an onshore wind farm. Some of these surveys include: wind resource assessments, grid connection assessments, topographical and geotechnical surveys, and environmental impact studies.

## Why submit another application after the Faw Side refusal?

We believe that there is still potential for a wind farm in this area. Due to the site being located within Dumfries and Galloway Council's 'Area with potential' for wind farm development', as well as the breadth of knowledge associated with this area due to the years of surveys and assessments, we believe Caple Rig Wind Farm is a very suitable site.

## Will new Overhead Lines be built?

CWP Energy has secured a December 2029 grid connection for the Proposed Development, meaning there will be no grid delays. The Proposed Development utilises an existing overhead line (OHL) route, rather than requiring new connection infrastructure.

## What has changed since the previous proposal?

To start, we have reduced the total amount of turbines from a total of 45 turbines, to 31 turbines. We are proposing turbines to only be located within Dumfries and Galloway, rather than it being split across into Scottish Borders. Further details of these changes will be presented within the EIA Report.

## How will you engage with the community?

We are committed to keeping the community involved during all stages of development. This will involve attending Community Council meetings, displaying information on our project dedicated webpage, as well as having regular opportunities for in-person meetings with members of the team.

## Will there be any job opportunities?

Through our 'Buy Scottish' Policy, we are wholly committed to involving local businesses throughout the entirety of the project, like we have done with all our current operational schemes. We hope to maximise opportunities for local businesses to provide products and services, therefore if you own or work for a local company, or know of any that may be able to help, please get in touch.

## When will construction start?

Once the planning application has been submitted, we will have more of a clearer view to when construction may start (given that consent is granted).

## How can I find out more about the proposals?

To find out more, please visit our website: [www.caplerigwindfarm.uk](http://www.caplerigwindfarm.uk)





# Community Involvement

CWP are committed to maximising local benefits from any development scheme.

From initial discussions, a few ideas have been drawn up and we welcome both your feedback and also any additional proposals you may have for consideration.

With this, we are keen to support the aims of the Local Development Plan and Langholm's Community Plan.

## Caple Rig Electricity Scheme (CREDS)

A local Electricity Discount scheme that could benefit properties within a radius of the turbines. Below is a map that shows the boundary of the scheme; if your property lies within this area, you could receive an annual payment towards your electricity bill.



## Shared Ownership

This gives community groups the chance to make an investment in Caple Rig Wind Farm. Communities are able to engage with, participate in, and benefit from the energy transition to net zero emissions. CWP are keen to engage with the community to see whether this is something of interest, and will fund a feasibility study to explore this opportunity further.

## Funding for local projects

CWP have already identified several local projects that could benefit from inputs of direct funding. If you are aware of or involved with any local projects, please note them and your contact details below.







# Let's Get Sporty

CWP Energy are funding 'Let's Get Sporty' sessions to Langholm Primary + Nursery, which encourages young people to be active and engaged in sporting activities. CWP Energy have a close relationship with this LGS scheme. Dayne Moore, Programme Manager at Let's Get Sporty, said:

“**The sessions have been fantastically received in both the school and the local community. Normally Langholm is a area that doesn't always get the opportunity for us to deliver in, due to other work elsewhere in the region, so to be able to provide sessions with the support of CWP Energy is fantastic.**”

CWP Energy have been working with the programme since 2021, reaching over 1,700 pupils across 10 schools in Dumfries and Galloway. The sessions aim to boost health and wellbeing and develop social skills, as the children can meet new friends and learn to collaborate with their peers.







# Next Steps

Specialist environmental and technical consultants are currently undertaking numerous surveys onsite to inform the Environmental Impact Assessment (EIA). The EIA will fully detail any potential effects and how we propose to mitigate them.

The following list summarises the elements which will be assessed within the EIA:

- Detailed Project Description
- Site Selection and Evolution
- Planning Policy
- Landscape, Visual and Residential Amenity
- Ecology
- Ornithology
- Cultural Heritage
- Hydrology and Geology
- Noise
- Traffic and Transport
- Other Considerations
- Schedule of Mitigation

To date, the following surveys have been instructed:

- Landscape and Visual Assessments
- Habitat and protected species surveys
- Bat surveys
- Ornithological surveys
- Groundwater Dependent Terrestrial Ecosystems Assessments
- Peat depth probing and mapping
- Archaeological surveys
- Ground and slope surveys







# How to have your say

## **'Buy Scottish' Policy**

Caple Rig Wind Farm will create new employment opportunities and will support local businesses. The policy ensures that both host communities and local businesses will benefit from the construction and operation of the scheme. If you have or work for a local business that could be utilised during the project's lifetime, please leave your details below.

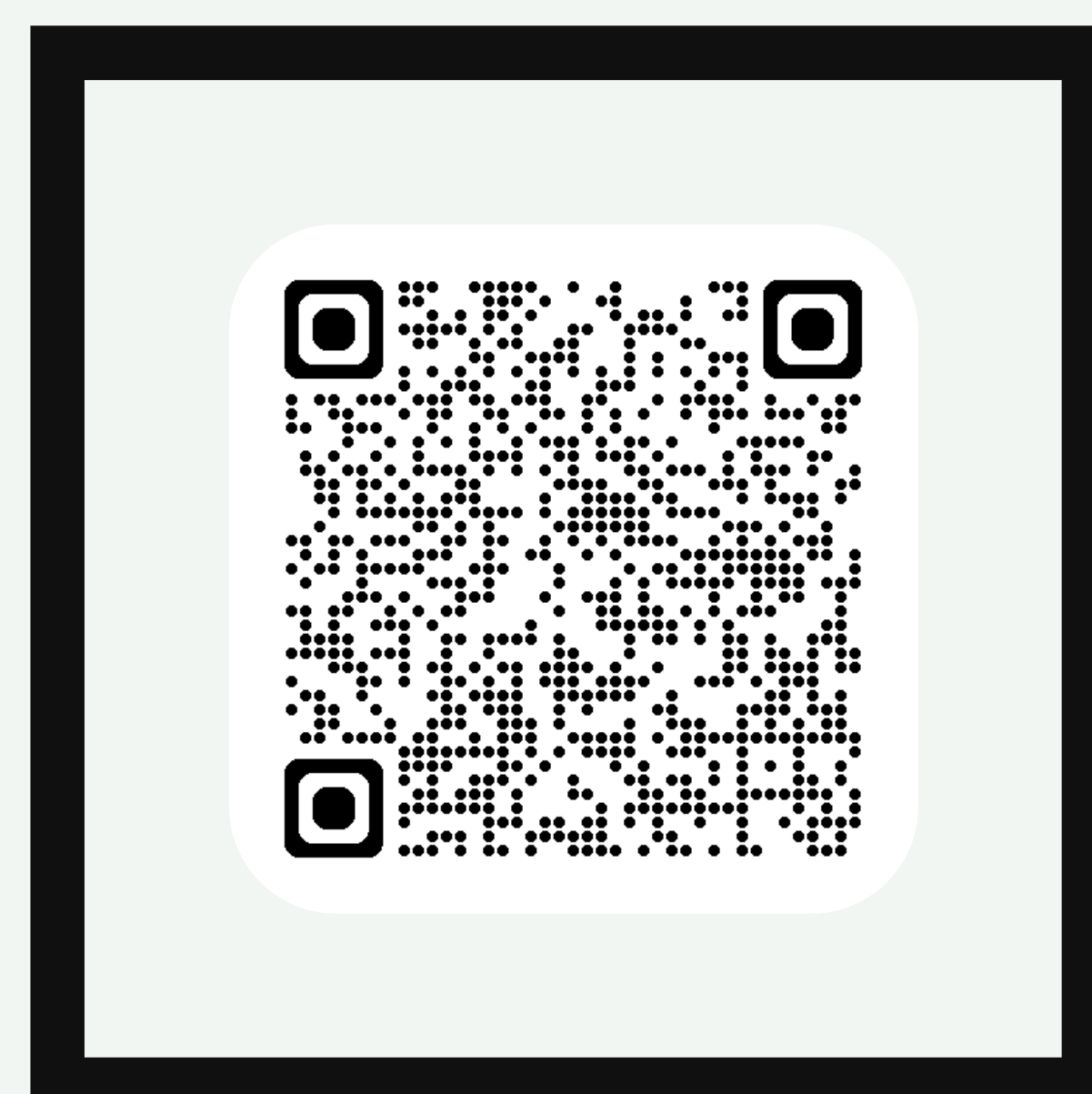
## **Community Investments**

CWP Energy will provide local communities with £5,000 per MW of electricity produced. This equates to £43.4 million across the lifetime of the wind farm. CWP Energy are seeking guidance and suggestions from the public and community groups as to how this investment could be managed and delivered locally. CWP are keen to engage with local groups to provide funding. If you are involved with any local projects, please leave your details below.

## **Community survey**

CWP are investigating residents' opinion of their local community and how it can be enhanced. We are keen to gauge how the development can positively benefit the local community, what facilities and services are needed and how the area would like to see developers engage with local residents. Please fill out our community survey below, also found via the QR code.

Scan the QR code to  
fill out our community  
survey online:



**Please complete our community survey to share your ideas on how  
community funding could be utilised.**